

FUSSEN



S6500

INTRAORAL SCANNER



CE NMPA FDA LISTED

V1.0 20240301

## ABOUT FUSSEN

FUSSEN is a leading global provider of digital solutions for dentistry. Since its establishment in 2010, FUSSEN has been committed to providing comprehensive digital solutions for dental clinics, facilitating the digitized management of imaging equipment and supporting the dental industry in achieving full lifecycle management. Our products are distributed in over 50 countries worldwide, serving over 80,000 dental clinics globally. With a rich product line and advanced software functionalities, we offer diverse product combinations to meet the unique needs of different clinics and markets, making us the preferred choice for dental professionals.



## DENTAL VALUED PRODUCTS

# REDEFINING DIGITAL DENTISTRY

**Autoclavable  
Scanning Tips**

**Open System  
Compatibility**

**No Licence  
Fees**

**No Calibration  
Needed**

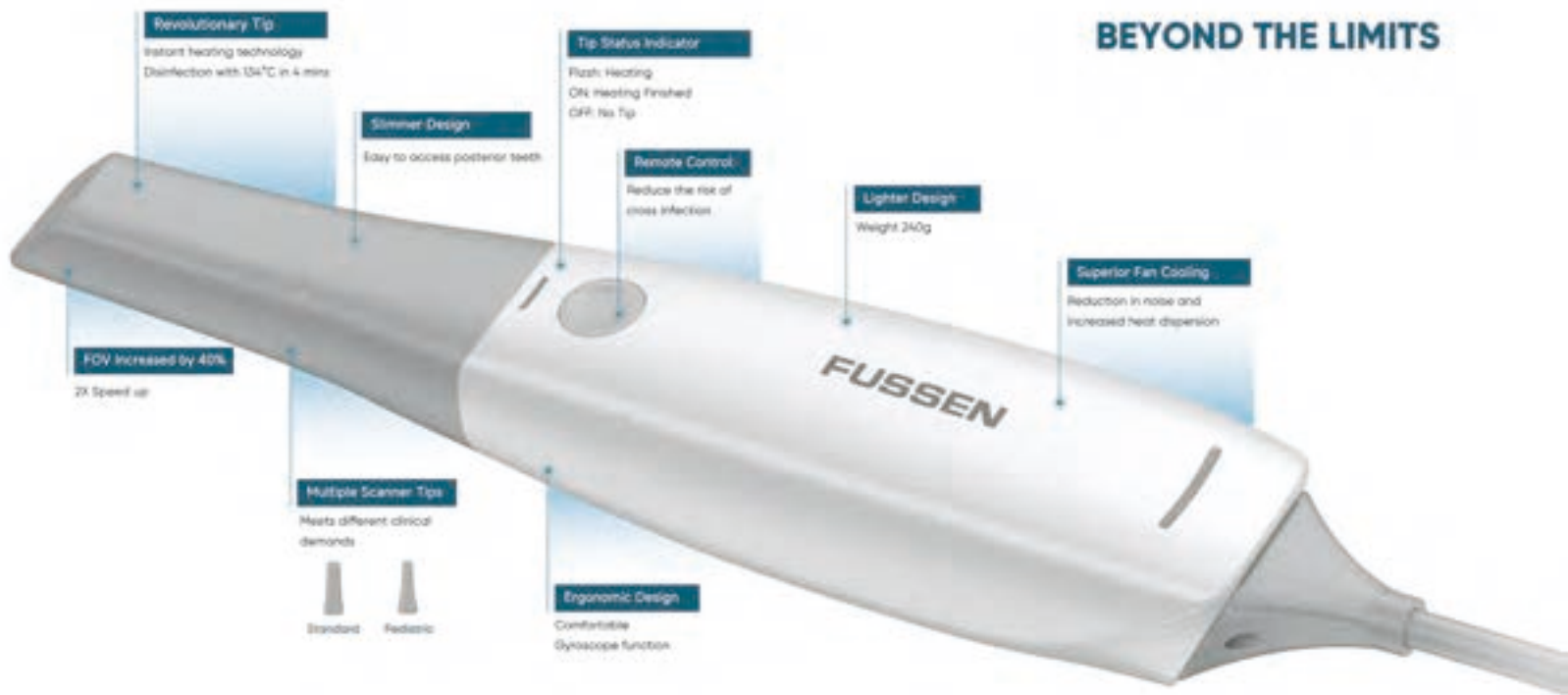
**High Technology  
Intraoral Scanner**

**User Friendly  
Interface**

**Designed For All  
Dental Treatments  
(Orthodontics,  
Prosthodontics,  
Implants, Dentures)**



## BEYOND THE LIMITS





# DentalFlex

## SCANNING HAS NEVER BEEN SO EASY!

Take a look at our seamless scanning workflow



Complete Scan Time  
3-5 Min Approx



Bite Alignment Time  
5 Sec Approx



Optimization Process  
1-2 Min Approx

**DIRECT CONNECTION TO CLOUD WITH ONE CLICK**

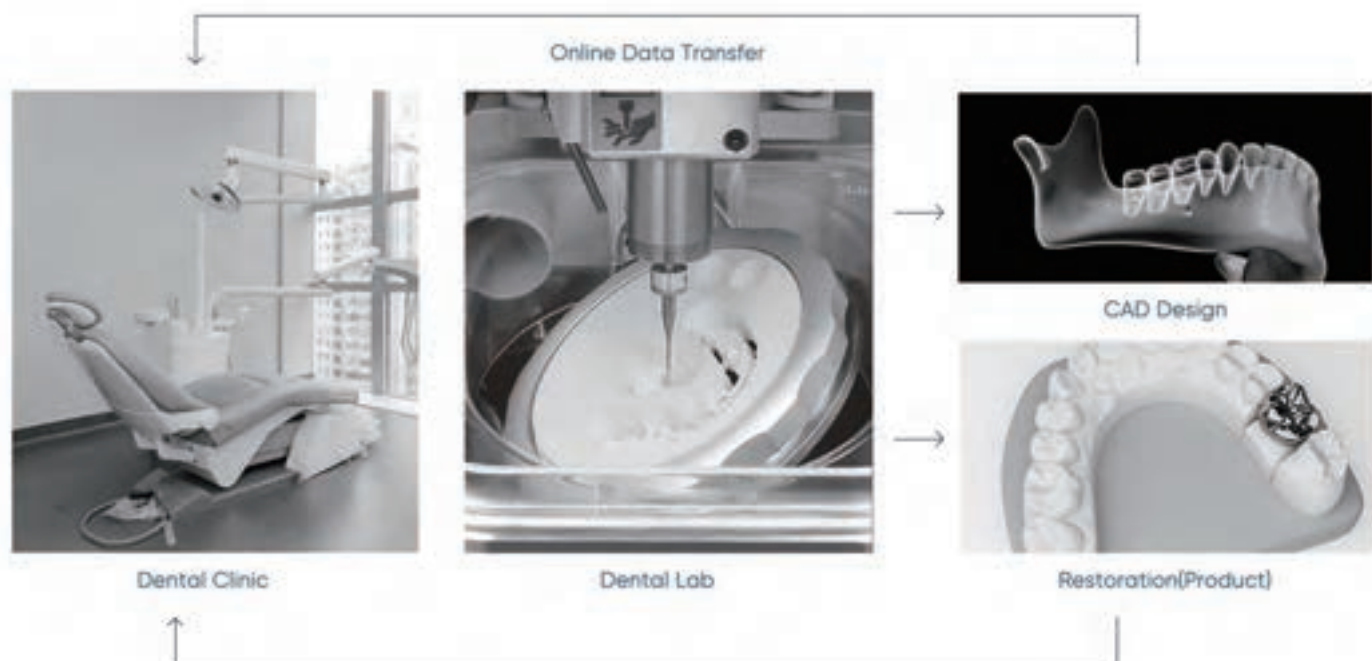


## CLINICAL PROCEDURES MADE EFFICIENT



## OPEN FILE EXPORT

Export with .STL,.PLY,.OBJ format, that is compatible with all Dental CAD Softwares  
(Exocad / 3Shape / Dental Wings)



# DentalFlex

## ADVANCED DIGITAL TOOLS



- **Measurement Tools**

Make reliable measurements on your digital files



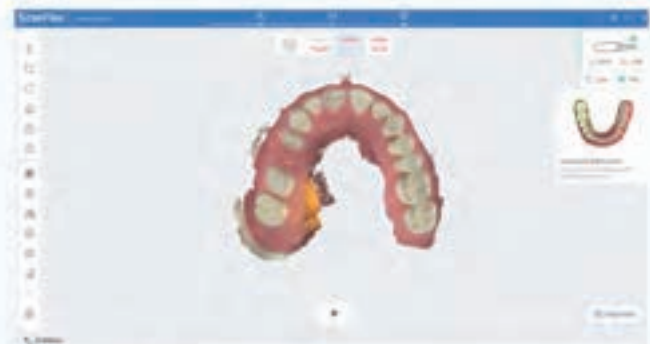
- **Working Area Selection**

Increases mesh density once optimization is finished



- **Locking Tool**

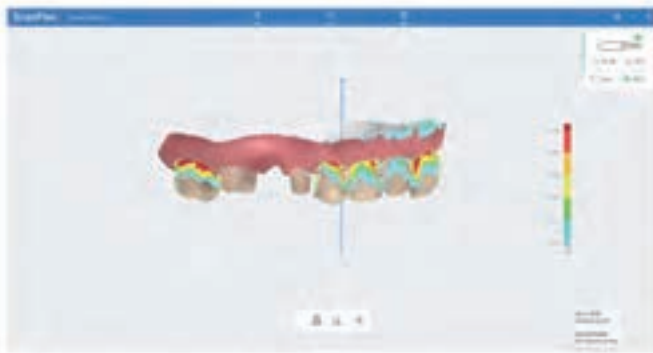
To protect the data of the area in case of rescanning



- **Reliability Map**

Shows the areas of unreliable data with orange color





### ● Undercut Analysis

Ensures the best fit for your restoration



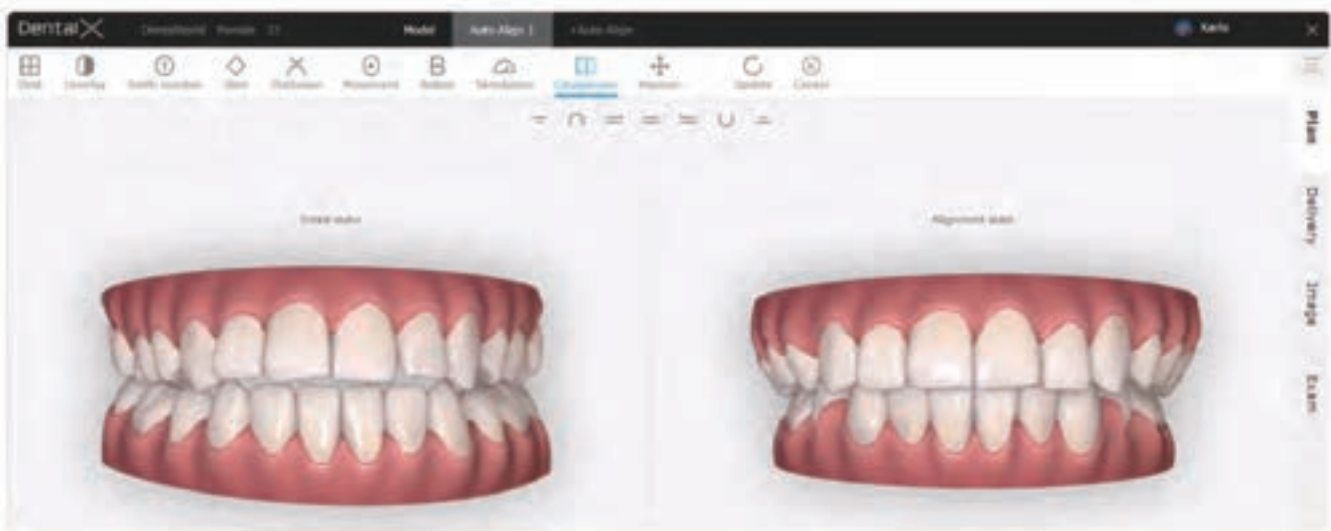
### ● Occlusion Analysis

Allows contact points observation and measurement in mm



### ● Artificial Intelligence

Automatically removes any unnecessary data such as gloves, tongue, lips, oral mucosa, etc



### ● Orthodontic Simulator

Engages patient in their orthodontic treatment and enhances communication between clinician and patient



# UNLOCK DIGITAL TRANSFORMATION!



## Conventional Dental Impression

Long Time Procedure

High Risk of Gag Reflex

Patient Discomfort

Longer Rehabilitation Time for Patient

Possible Communication Errors and Misunderstandings between Dentists and Dental Technicians

## Digital Impression With Intraoral Scanner

Short Time Procedure

Minimizes Risk Of Gag Reflex

Maximum Patient Comfort

Enables One Single Visit Treatment

Real Time Communication between Dentists and Dental Technicians

## TECHNICAL SPECIFICATIONS

MODEL	INTRAORAL SCANNER S6500
Accuracy Single Crown	10 $\mu$ m( $\pm$ 1.1 $\mu$ m)
Anti-Fog Technology	Built-in automatic heating fan
Output Format	STL / PLY / OBJ
Cable Length	2 m
Data Transmission	USB 3.0
Scan Head Size	Standard: 95.3mm×22.5mm×16.6mm Pediatric: 94mm×17.9mm×13.2mm
Scanning Tips	Standard *3 / Pediatric *1 Scanning Tips 121°C for 30min Autoclavable 100-150 times
Weight	≤ 240 g
Scanner Size	240mm(L) x 45mm(W) x 36mm(H)
Sensor	High speed CMOS
Operating System Requirements	i7-13700HX 2.10GHz NVIDIA GeForce RTX 4060 6G 32G 1TB SSD / Window 11 64bit Resolution 1920*1080 / USB-Type 3.2 Gen 1



HQ: 9F, 10F, Building D1, Nanshan Park, 1001 Xueyuan Blvd, Taoyuan Street, Nanshan District, Shenzhen, China

WEB: [www.fussengroup.com](http://www.fussengroup.com)

CONTACT US:

[sales@fussengroup.com](mailto:sales@fussengroup.com)

[International.support@fussengroup.com](mailto:International.support@fussengroup.com)

[International.marketing@fussengroup.com](mailto:International.marketing@fussengroup.com)



AUTHORIZED DISTRIBUTOR

